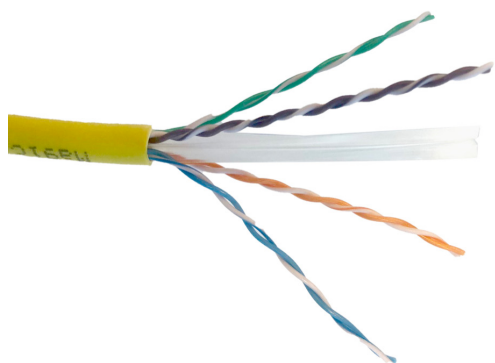


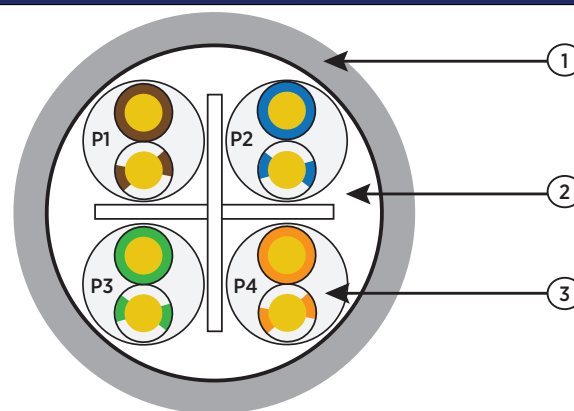
# Connectix Cabling Systems™

## Cat 6 UTP Patch Cable

Connectix Category 6 UTP Patch Cable offers the performance characteristics required by the Category 6 Standard. When used in conjunction with Connectix Category 6 RJ45 Jacks and a Category 6 network the user will get a link performance exceeding Category 6 requirements. Available in a variety of colours, allowing patch leads to be made to your exact requirements.



### Diagram



1. Sheath  
2. Filler  
3. 4P

P1: Brown-White/Brown  
P2: Blue - White/Blue  
P3: Green - White/Green  
P4: Orange - White/Orange

### Cable Specification

Conforms to	IEEE 802.3: 10Base-T; 100Base-T; 1000Base-T 10GBase-T standards: ANSI/TIA 568C: ISO/IEC 11801 2nd ed. IEC 61156-5 2nd ed.; EN 50173-1; EN 50288-10 RoHS2002/95/EC
Conductor	Bare copper wire
Insulation	Polyethylene
Shielding	Aluminium Foil Mylar
Jacket Material	LSZH
Jacket Thickness	0.65mm
Jacket Diameter	5.6 + 0.2mm

### Ordering Information

Product Description	Part Number
Cat 6 UTP Patch Cable 500m Reel	001-003-002-**

### Cable Colour Code \*\*

Grey	41	Yellow	46
White	42	Orange	47
Blue	43	Purple	48
Green	44	Black	59
Red	45		

### Electrical Specifications

Conductor Resistance	7/0.16BC; Max. 148 ohms/km at 20°C
Insulation Resistance	Min 10 mega ohms/m at 20°C