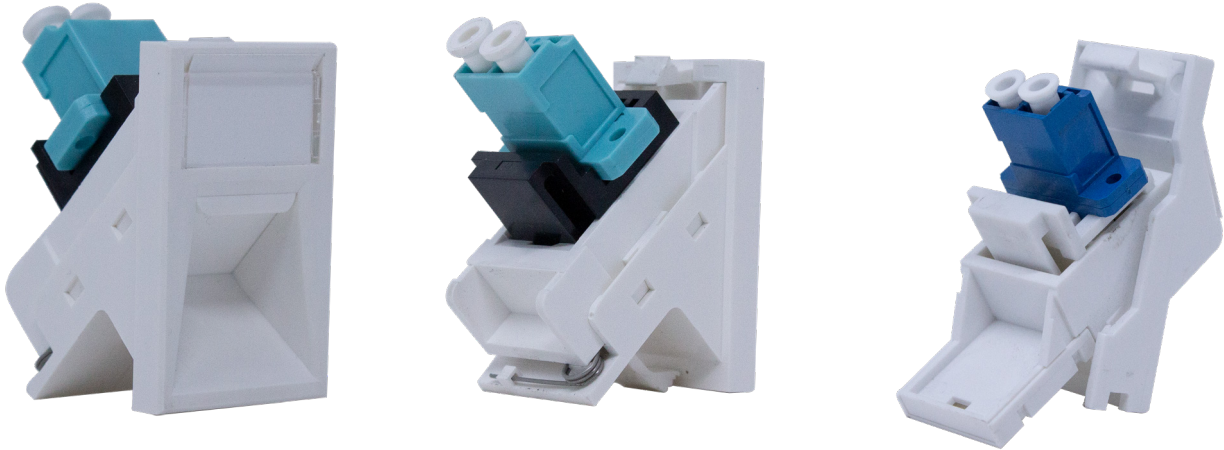


Connectix Cabling Systems™

LC Keystone Adaptor

Our Keystone adapters are compatible with LC Fibre connectors and can support both Singlemode and multimode fibre and fascias can be either LJ6C or Euromod size.

One Fascia is required for each module used in a faceplate



Ordering Information

Product Description	Part Number
LC SM LJ6C Keystone Module	008-010-010-89
LC MM LJ6C Keystone Module	008-010-010-88
LC MM Euromod Keystone Module	008-010-010-96
LC SM Euromod Keystone Module	008-010-010-86
LC MM Angled Fibre Euromodule	008-000-003-20
LC SM Angled Fibre Euromodule	008-000-003-30

Features & Benefits

- Quick and easy to install
- Easy to use reinsertion label
- Snap-fit to terminate
- Suitable for all standard Keystone applications
- Compact design
- Euro Module and LJ6C options available
- Fits the range of Connectix Faceplates

Specifications - LJ6C

Width	25 mm
Overall Depth	32.5 mm
Mounting Depth	23.5 mm
Height	39 mm
Material	Flame retardant Polycarbonate/ABS thermoplastic resin

Specifications - Euro Module

Width	25 mm
Overall Depth	32.5 mm
Mounting Depth	23.5 mm
Height	50 mm
Material	Flame retardant Polycarbonate/ABS thermoplastic resin